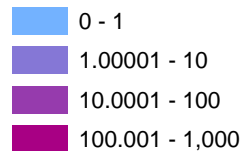


# Population Displacement from Sea Level Rise in Florida, US

Created by Eric J.S. on May 19, 2021



Population Density (per 100 sq m)

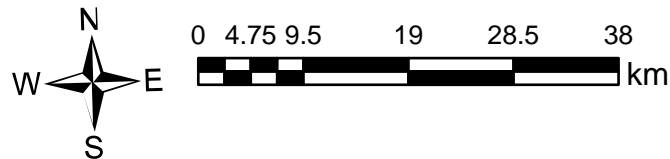
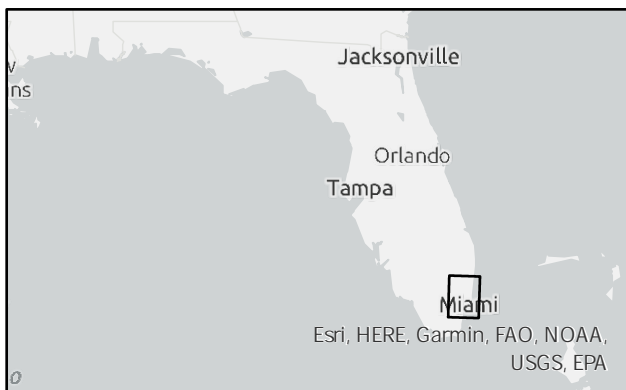
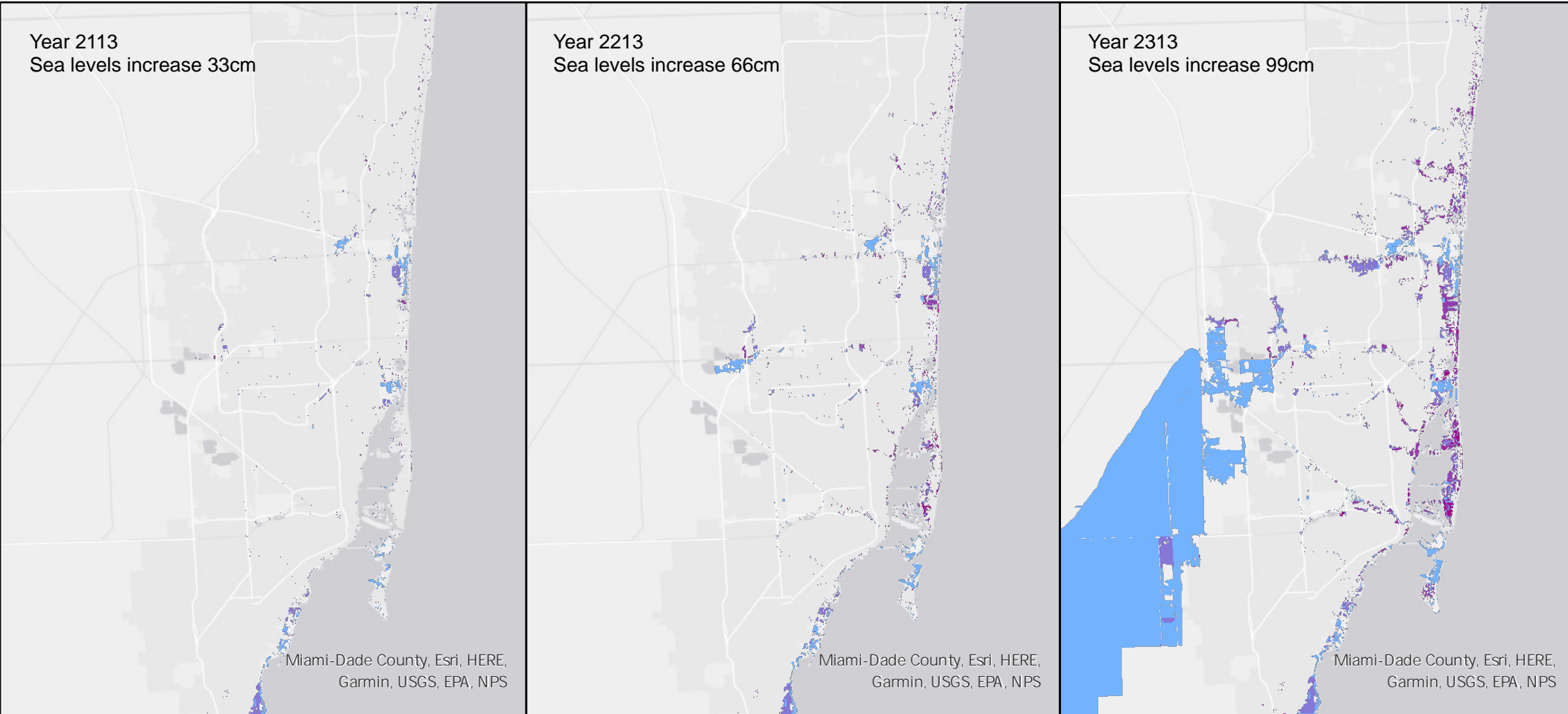


All data was gathered from the Florida Geographic Data Library (FGDL) in May 2021. FGDL can be found online here:  
<https://www.fgdl.org/metadataexplorer/explorer.jsp>

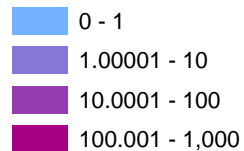
Spatial Reference  
Name: Albers Conical Equal Area [Florida Geographic Data Library]

# Population Displacement from Sea Level Rise in Miami, Florida

Created by Eric J.S. on May 19, 2021



Population Density (per 100 sq m)

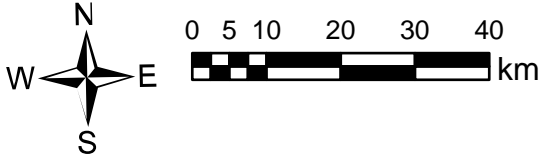
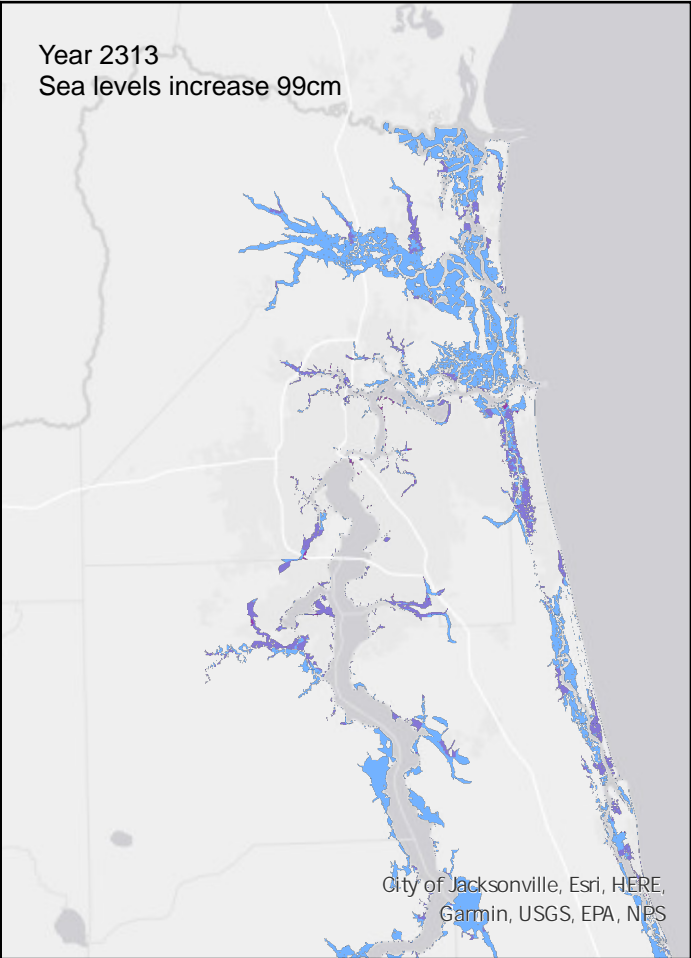
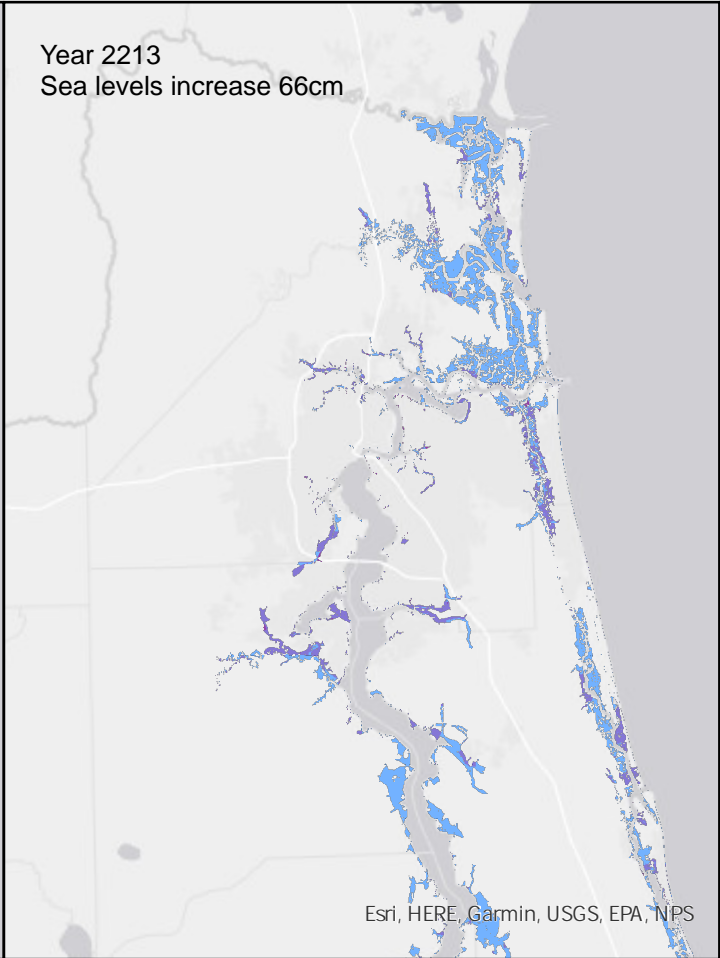
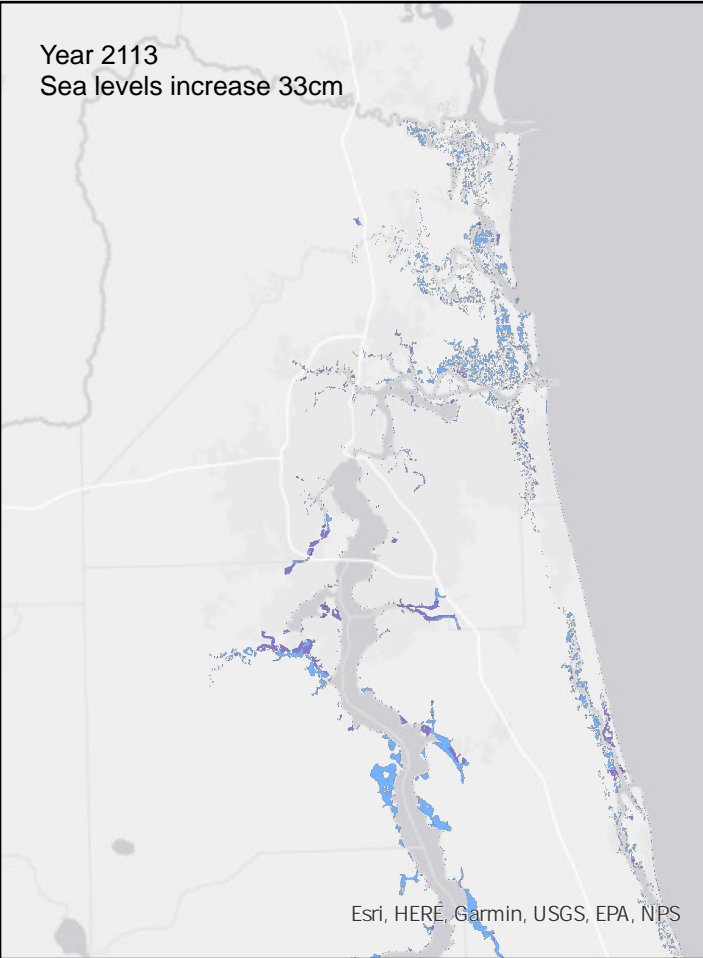


All data was gathered from the Florida Geographic Data Library (FGDL) in May 2021. FGDL can be found online here: <https://www.fgdl.org/metadataexplorer/explorer.jsp>

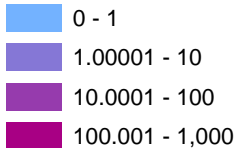
Spatial Reference  
Name: Albers Conical Equal Area [Florida Geographic Data Library]

# Population Displacement from Sea Level Rise in Jacksonville, Florida

Created by Eric J.S. on May 19, 2021



Population Density (per 100 sq m)



All data was gathered from the Florida Geographic Data Library (FGDL) in May 2021. FGDL can be found online here: <https://www.fgdl.org/metadateexplorer/explorer.jsp>

Spatial Reference  
Name: Albers Conical Equal Area [Florida Geographic Data Library]